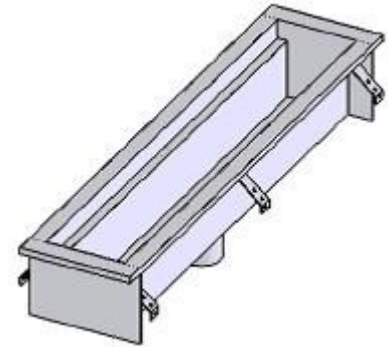


SDcTR-Q44085 6" Wide Trench Drain

StainlessDrains.com manufactures a full line of custom trench drains for the foodservice, plumbing, and construction industries. All drains meet the U.S. FDA standards and are available with a round, square or v bottom channel.

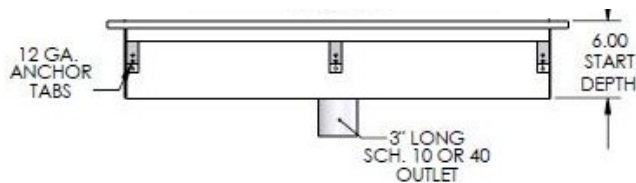
Typical Applications: Chemical & Food Processing, Pharmaceutical Applications, Restaurants and Institutional Kitchens, Retail Outlets, Water, Sports and Amusement Parks

ENGINEERING SPECIFICATION: StainlessDrains.com SDcTR-Q44085 6" Wide Trench, 14 Gauge, 304 Stainless Steel. Channels shall be provided with 1/8" per foot built-in slope and anchor tabs at 15-18" intervals.



Standard Outlet Size

2" - 3" - 4" - 6"



CHANNEL OPTIONS:

- 316 Stainless Steel
- Outlets placed per customer's specs
- Schedule 10 or Schedule 40 outlet(s)
- Threaded outlets
- Custom Lengths, Widths and Depths
- Catch Basins and Deep Sumps
- Sediment Baskets or Scoops
- T Sections, 45 or 90 degree turns
- Custom Outlet Sizes: 8", 10", 12"
- Custom Slope

GRATE OPTIONS:

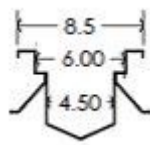
- 12 Gauge Light Duty Perforated Grate
- 10 Gauge Medium Duty Slotted Grate
- 1/4" Medium Duty Slotted Plate or Perimeter Gap
- 1/2" Heavy Duty Slotted Plate or Perimeter Gap
- Heavy Duty 1/4" x 1-1/2" Bars on 1" Centers
- Vandal Resistant Secured Grate



SDcTR-R



SDcTR-Q



SDcTR-V

NOTE: Trench Drains can be shipped in sections up to 50' and can be field-welded up to any length required.

One 15 minute field weld can produce 100' of SDcTR.

No bolts! No flanges!

No hassles!



Perforated Grate



Slotted Grate



Perimeter Gap



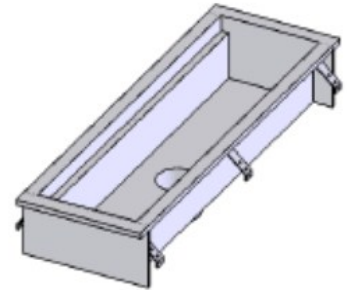
Bar Grate

SDcTR-Q44120 12" Wide Trench Drain

StainlessDrains.com manufactures a full line of custom trench drains for the foodservice, plumbing, and construction industries. All drains meet the U.S. FDA standards and are available with a round, square or v bottom channel.

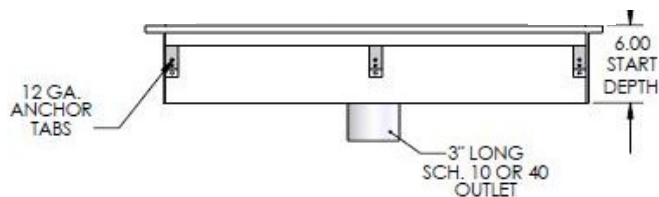
Typical Applications: Chemical & Food Processing, Pharmaceutical Applications, Restaurants and Institutional Kitchens, Retail Outlets, Water, Sports and Amusement Parks

ENGINEERING SPECIFICATION: StainlessDrains.com SDcTR-Q44120 12" Wide Trench, 14 Gauge, 304 Stainless Steel. Channels shall be provided with 1/8" per foot built-in slope and anchor tabs at 15-18" intervals.



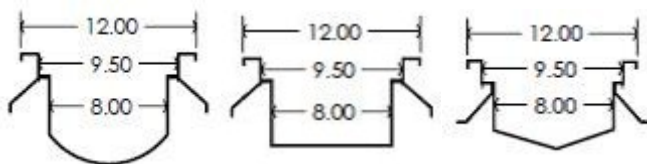
Standard Outlet Size

2" - 3" - 4" - 6"



CHANNEL OPTIONS:

- 316 Stainless Steel
- Outlets placed per customer's specs
- Schedule 10 or Schedule 40 outlet(s)
- Threaded outlets
- Custom Lengths, Widths and Depths
- Catch Basins and Deep Sumps
- Sediment Baskets or Scoops
- T Sections, 45 or 90 degree turns
- Custom Outlet Sizes: 8", 10", 12"
- Custom Slope



SDcTR-R

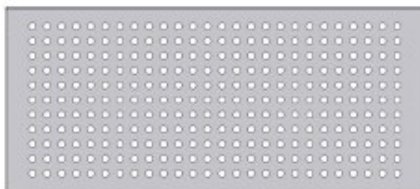
SDcTR-Q

SDcTR-V

GRATE OPTIONS:

- 12 Gauge Light Duty Perforated Grate
- 10 Gauge Medium Duty Slotted Grate
- 1/4" Medium Duty Slotted Plate or Perimeter Gap
- 1/2" Heavy Duty Slotted Plate or Perimeter Gap
- Heavy Duty 1/4" x 1-1/2" Bars on 1" Centers
- Vandal Resistant Secured Grate

NOTE: Trench Drains can be shipped in sections up to 50' and can be field-welded up to any length required.



Perforated Grate



Slotted Grate



Bar Grate

SDcTR-Q44085-DS 6" Deep Sump Trench Drain

Deep Sump Trench Drains are the perfect solution for areas exposed to heavy water or debris. All drains meet the U.S. FDA standards.

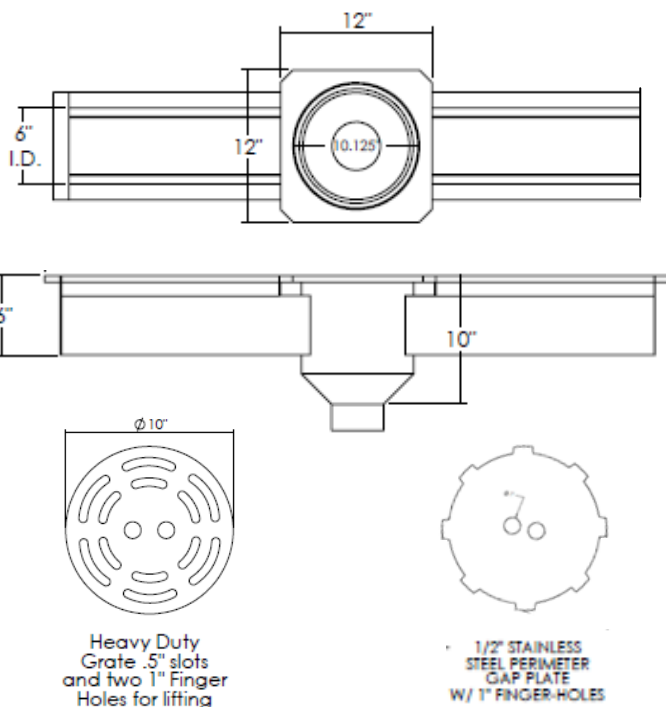
Typical Applications: Chemical & Food Processing, Pharmaceutical Applications, Restaurants and Institutional Kitchens

ENGINEERING SPECIFICATION: StainlessDrains.com SDcTR-Q44085-DS 6" Wide Deep Sump Trench, 14 Gauge Trench Body, 12 Gauge Sump Body, 304 Stainless Steel. Channels shall be provided with 1/8" per foot built-in slope and anchor tabs at 15-18" intervals.



Standard Outlet Size

2" - 3" - 4" - 6"



CHANNEL OPTIONS:

- 316 Stainless Steel
- Outlets placed per customer's specs
- Schedule 10 or Schedule 40 outlet(s)
- Threaded outlets
- Custom Lengths, Widths and Depths
- Catch Basins and Deep Sumps
- Sediment Baskets, Double Sediment Baskets, Scoops
- T Sections, 45 or 90 degree turns
- Custom Outlet Sizes: 8", 10", 12"
- Custom Slope

GRATE OPTIONS:

- 12 Gauge Light Duty Perforated Grate
- 10 Gauge Medium Duty Slotted Grate
- 1/4" Medium Duty Slotted Plate or Perimeter Gap
- 1/2" Heavy Duty Slotted Plate or Perimeter Gap
- Heavy Duty 1/4" x 1-1/2" Bars on 1" Centers
- Vandal Resistant Secured Grate

NOTE: Deep sump trench drains are limited to a 6" minimum width for trench drain opening and 9 1/2" maximum.

